

SWS

Water Spray System

General information & application

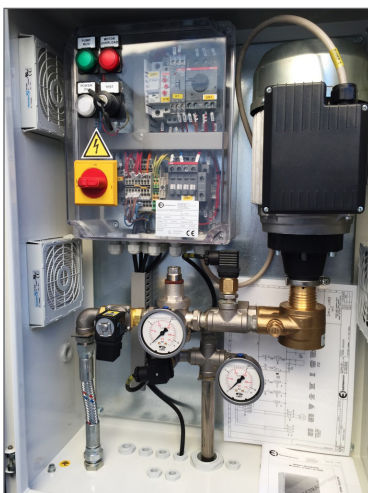
SWS is a full Water Spray System, including pump and electrical cabinet, for air cooled condensers, liquid coolers and gas coolers. Air heat exchangers are normally selected to accomplish performance requirements in the hot season peaks. As a consequence, units are often oversized and thus more expensive. In such cases a Water Spray System can help in selecting correctly sized units. Benefits of increased global energy efficiency, sound reduction etc are now combined in a simple Alfa LU-VE solution.

Features

- Available in three sizes: 500 l/h, 1000 l/h, 2000 l/h to cover all air heat exchanger range needs
- Power supply 230 V/1 ph/50 Hz
- 6 bar pump
- Draining valve for complete water discharge
- Stainless steel piping with spray nozzles
- Application temperatures from +4 °C to +40 °C
- Protection Class IP55
- Switchboard with pump protection and signals (remote ON/OFF and fault alarm)
- Metal casing in painted galvanized steel (RAL9002) or stainless steel (optional).



SWS - Water Spray System



Benefits

- Optimized heat exchanger selection
- Reduced footprint
- Reduced transport costs
- VDI 2047 Part 2 compliant
- Fully integrated with Alfa LU-VE control systems
- Energy saving

Integration with control systems

SWS is perfectly integrated with Alfa LU-VE control solutions. ICM and master controller (PTec), can easily manage the complete Water Spray System. According to various parameters (such as pressure or temperature) the spray system is activated to increase capacity and face peak loads.

Selection

SWS Water Spray Systems can be selected with Alfa LU-VE air heat exchanger selection software. A calculation sheet for detailed water flow calculation is available via the Alfa LU-VE sales organization.

Application

With standard aluminum fins, operating time of the Water Spray System is limited to 200 h/year. For longer usage periods and optimal corrosion resistance fin coating is advised. For details, contact your local Alfa LU-VE representative.

Water quality

Tap water (according to EC Directive 98/93) normally complies with the requirements for water quality as listed below.

- $6 < \text{pH} < 8$
- Conductivity $< 500 \mu\text{S/cm}$
- Chlorides $< 50 \text{ ppm}$
- Sulphates $< 50 \text{ ppm}$
- Hardness $2 \div 4 \text{ }^\circ\text{f}$
- Total bacterial count $< 1,000 \text{ cfu/ml}$

Certification

The Alfa LU-VE quality system is in accordance with ISO 9001 and ISO 14001. All SWS Water Spray Systems are manufactured according to CE regulations and VDI 2047 Part 2.



AHE00092EN 2101

Alfa LU-VE is a trademark registered and owned by LU-VE Group. Alfa LU-VE reserves the right to change specifications without prior notification.

How to contact Alfa LU-VE

Up-to-date Alfa LU-VE contact details for all countries are always available on our website at alfa.luvegroup.com